

Looking Ahead

Top 10 Improvements survey takers would like to see:

| Rank | Feature |
|------|----------------------------------|
| 1 | Bathrooms |
| 2 | Drinking Fountains |
| 3 | Lighting |
| 4 | Playground Improvements |
| 5 | Security |
| 6 | Picnic Pavilion |
| 7 | Dog Park |
| 8 | Running/Walking Track |
| 9 | Picnic Area Improvements |
| 10 | Sports Courts/Field Improvements |

"More organized events sponsored by the community. The area is underutilized."

How survey takers would like to see the 'Ticket Takers' building used in the future:

| Feature | % |
|-------------------------|-----|
| Bathrooms | 41% |
| Visitors' Center | 17% |
| Concessions | 16% |
| Interpretive Center | 10% |
| Bike Rental/Repair Shop | 9% |
| Historic Landmark | 7% |

"Would really benefit from having bathrooms!"



Additions to the park mentioned in Open-Ended Responses:

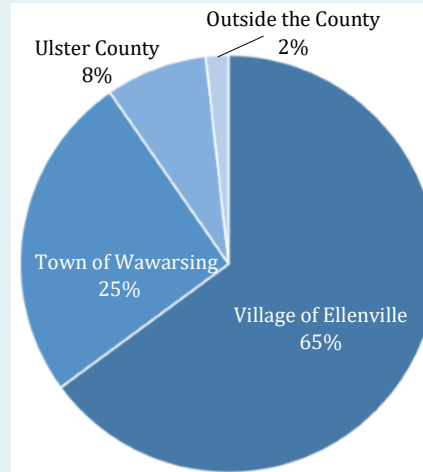
| Feature | Mentions |
|-----------------------|----------|
| Bathrooms | 7 |
| Dog Park | 3 |
| Pool | 3 |
| Splash Pad | 3 |
| More Events | 3 |
| Bike Station | 2 |
| Snow Tubing | 1 |
| Futsal | 1 |
| Handball | 1 |
| Electric Car Chargers | 1 |
| Skate Park | 1 |
| Drinking Fountains | 1 |
| Snack Bar | 1 |
| Batting Cage | 1 |
| Mini-golf | 1 |
| Soccer Field | 1 |
| Gazebo | 1 |

"Wish it had an official handball court with a cement wall, it's another sport that's beneficial."

"Ellenville needs a dog park. This would be an amazing opportunity to find a way to include one."

2018 Berme Road Park Survey Summary

Who Took the Survey?

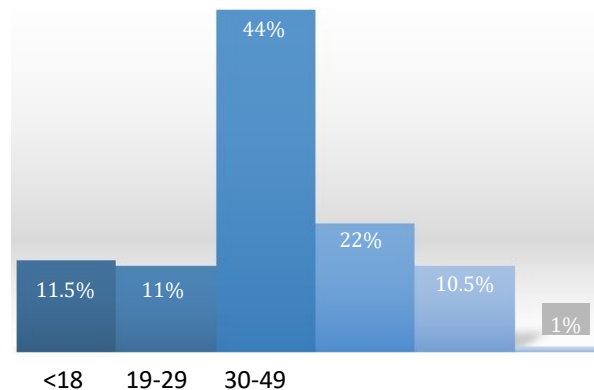


Residence

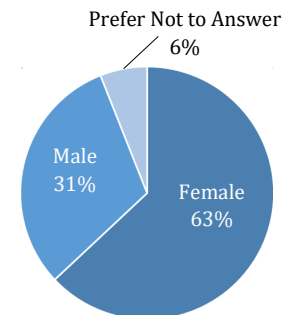
The majority (65%) of survey takers were from the Village of Ellenville, while 25% were from the Town of Wawarsing, 8% were from Ulster County, and 2% were from outside the County.

180 Respondents

Age



Gender



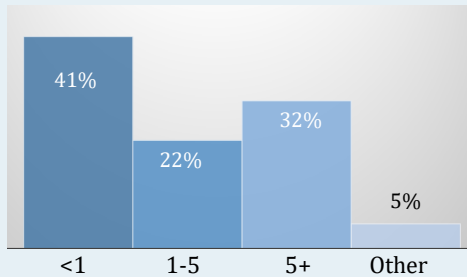
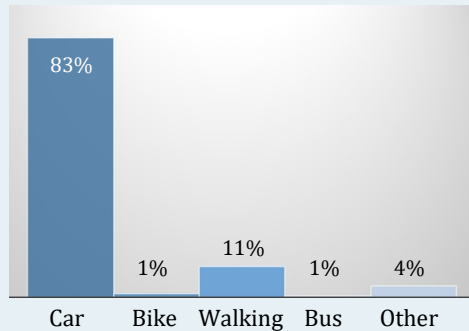
Hudson River Valley Greenway



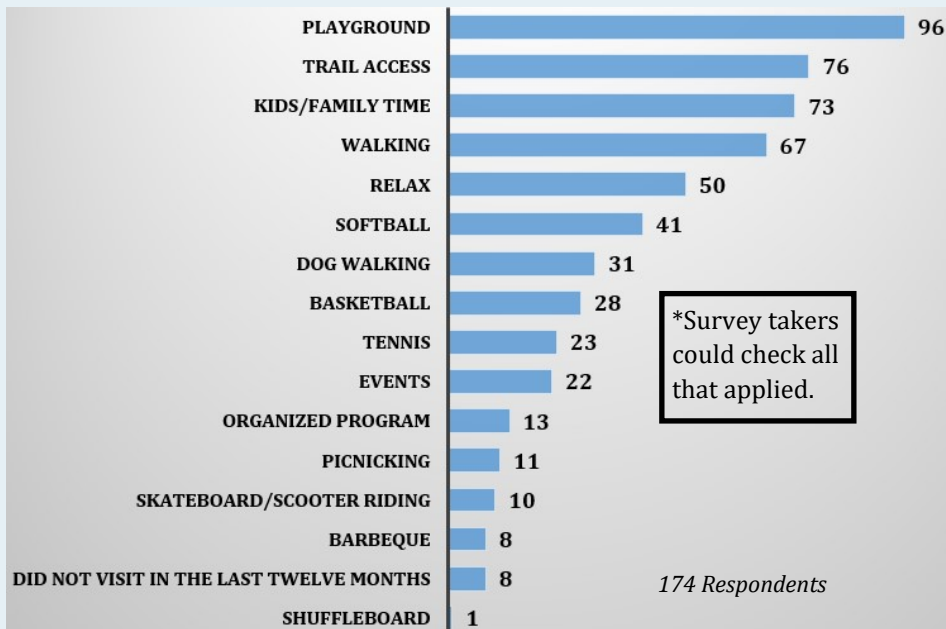
Park Logistics

What mode of transportation do you use to get to the park?

How far do you travel to get to the park? (In Miles)



Why do you go to the park?



*Survey takers could check all that applied.

Current Perception

"Park area could be greatly utilized if it had a facelift and upgrade."

Rate the Conditions of the Park:

| Feature | Good | Bad |
|------------------|------|-----|
| Tennis Courts | 17% | 83% |
| Shuffleboard | 20% | 80% |
| Sidewalks | 33% | 67% |
| Signage | 35% | 65% |
| Basketball Court | 35% | 65% |
| Softball Field | 42% | 58% |
| Trails | 45% | 55% |
| Parking | 45% | 55% |
| Playground | 47% | 53% |

Open-Ended responses mentioned poor conditions in the following areas:

| Feature | Mentions |
|----------------|----------|
| Security | 12 |
| Signage | 6 |
| Road Safety | 3 |
| Basketball | 3 |
| Trails | 3 |
| Park Upkeep | 2 |
| Parking | 2 |
| Softball Field | 1 |
| Tennis Court | 1 |



"Poor signage to indicate what's available on the premises."

"Promoting and providing trail access is top priority!"